



**TO SAFEGUARD
YOUR
WONDERFUL JOURNEY**

2023



Committed to Become a World-Class Automotive
Electronics Systems Supplier

COMPANY PROFILES / 1

HISTORY / 4

PRODUCTS / 5

Delivering a Comprehensive Solution of Technology, Products,
Systems, and Services for Our Customers

JYD Electronics Dept



The Electronic Products Division of **Zhengzhou JingYiDa Auto Parts Co., Ltd.**, established in 2011, is a subsidiary dedicated to the research, development, production, and sales of automotive components.

The company specializes in two categories of products: electronic products and low voltage wire harnesses.

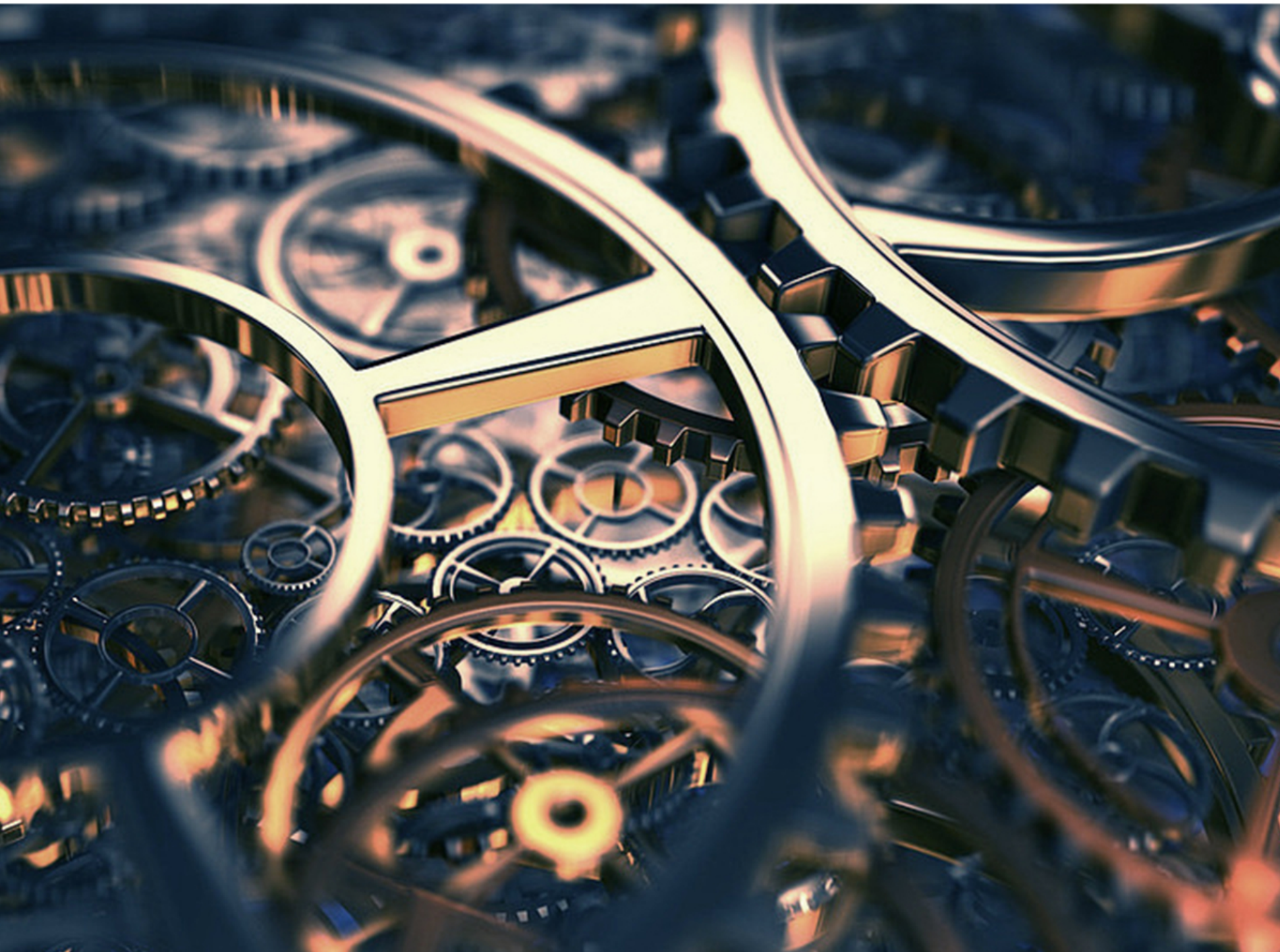
At present, we primarily serve domestic leading commercial vehicle, passenger vehicle, sanitation vehicle, and construction machinery manufacturers. Our products are not only supplied to these manufacturers but are also exported to more than 130 countries and regions worldwide. Some of the countries and regions include Cuba, France, Britain, Israel, Saudi Arabia, as well as Hong Kong and Macau.

COMPANY PROFILES

Our company has established a comprehensive quality management system and has obtained the IATF16949 certification. Additionally, our research and development process has achieved CMMI-DEVL3 certification, which enables us to devote ourselves to providing customers with high-quality automotive components and creating value for society.

CERTIFICATE





HISTORY

2011

Establishment of the company.

2013

Mass production of second-generation instrument.

Mass production of vehicle controller.

2016

Mass production for third-generation instrument.

Official implementation of SMT production line.

Establishment of the Electronic Experimental Center.

Achievement of CMMI-DEV L3 certification.

2019

Mass production of full LCD instrument.

Bulk installation of full LCD instrument in passenger vehicles.

2021

Mass production of instrument for trucks.

Mass production of next-generation mid-range instrument.

2022

The Experimental Center has obtained CNAS certification.
Successful research and development of Intelligent Cockpit Products.

Instrument Cluster

ICU331



ICU321



ICU511



ICU531



Feature overview

OTA remote upgrade,
UDS diagnosis;
High-performance 2D/3D graphics engine,
fabulous animation effect.

Specification

7-inch TFT | 800*480
2 *pointer
16* warning indicator
4* analog input
44* digital input
4* power output
1*12V sensor power supply
4*CAN | 1*LIN

Application

business bus | light bus

Feature overview

High-performance 2D/3D graphics engine,
fabulous 3D and animation effect;
Pre-installed multiple interface styles to meet
the personalized needs of customers;
Built-in light sensor for automatic adjustment of
backlight brightness;
OTA remote upgrade, UDS diagnosis,
easy maintenance.

Specification

7-inch TFT | 800*480
2*pointer | 4* key
25* warning indicator
10* analog input
44* digital input
1* frequency input
4* power output
1*9V sensor power supply
4*CAN | 1*LIN

Application

bus

Feature overview

High-performance 2D/3D graphics engine,
fabulous 3D and animation effect;
Pre-installed multiple interface styles to meet the
personalized needs of customers;
Built-in light sensor for automatic adjustment of
backlight brightness;
OTA remote upgrade, UDS diagnosis,
easy maintenance.

Specification

12.3-inch TFT | 1920*720 | 4* key
10* analog input
44* digital input
1* frequency input
4* power output
1*9V sensor power supply
4* video input
4*CAN | 1*LIN | 1*USB

Application

Bus

Feature overview

Virtual dial, gorgeous animation effect (3D engine),
rich display information;
Pre-installed multiple interface styles to meet the
personalized needs of customers ;
UDS diagnosis, easy maintenance;
With mapping function (LVDS) .

Specification

12.3-inch TFT | 1920*720
1* analog input
10* digital input
3*CAN | 1*LIN

Application

Passenger Car

Instrument Cluster

ICU362



Feature overview

High-performance 2D/3D graphics engine, fabulous 3D and animation effect; Integrated black design, similar to full LCD effect; OTA remote upgrade, UDS diagnosis, easy maintenance;

Specification

9-inch TFT | 1920*720
4*LED progress bar display
38*warning indicator
5*analog input
37*digital input
1*frequency input
4*power output
2*5V sensor power supply
1*12V sensor power supply
2*CAN

Application

Truck

ICU311



Feature overview

Tubular-shaped, novel appearance and strong sense of technology; High-performance 2D graphics engine, delicate and vivid display.

Specification

5-inch TFT | 400*240
4*pointer | 4* key
34* warning indicator
4* analog input
40* digital input
6* power output
1*12V sensor power supply
3*CAN

Application

bus | coach

Gear Panel

ATMD111



Feature overview

UDS diagnosis, online upgrade and easy maintenance;
Press key for gear shifting.
Long service life and high reliability;
Small size, light-weight and clip structure for easy installation;
Gear output supports CAN message and hard-wired signal;
Unified interface for the whole product series.

Specification

Operating temperature: -40 to 85°C
Working voltage: 9-32V
Gear input: RNDL
Gear output: RNDL
Key service life: 500,000 times
IP grade: IP55 (front)
Size: 120.1*66.1*47.6
1*CAN

Application

new energy bus | coach

ATMD211



Feature overview

UDS diagnosis, online upgrade and easy maintenance;
Press key for gear shifting.
Long service life and high reliability;
Small size, light-weight and clip structure for easy installation;
Gear output supports CAN message and hard-wired signal;
Unified interface for the whole product series.

Specification

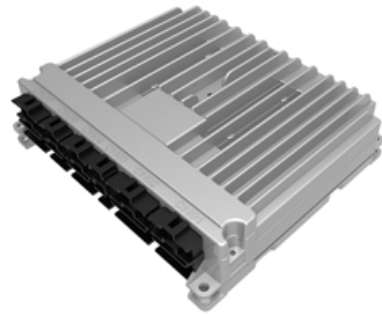
Operating temperature: -40 to 85°C
Working voltage: 9-32V
Gear input: RNDL
Gear output: RNDL
Key service life: 1,000,000 times
IP grade: IP54 (front)
Size: 150*98*32.9 mm
1*CAN

Application

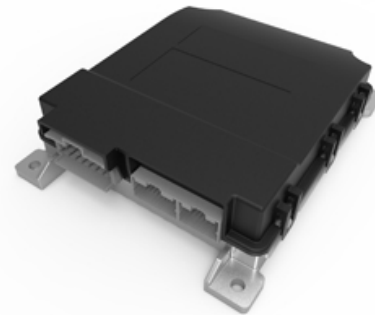
new energy bus | coach

Body Controller

BCM304



BCM313



Feature overview

UDS diagnosis, online upgrade and easy maintenance;
 Universal input and output module, convenient expand;
 Turn signal light flasher function, compliant with related regulation;
 Direct drive wiper motor;
 Overload, overheat and short circuit protection;
 Multiple interfaces for various types of vehicles.

Specification

Operating temperature: -30 to 70°C
 Working voltage: 16-32V
 Analog input: 2-way
 Digital input: 30-way
 Power source side output: 32-way
 Grounding side output: 2-way
 IP grade: IP54 (front)
 Size: 240.2*215.6*46
 1*CAN

Application

new energy bus
 coach and special vehicle

Feature overview

UDS diagnosis, online upgrade and easy maintenance;
 Universal input and output module, convenient expand;
 Turn signal light flasher function, compliant with related regulation;
 Direct drive wiper motor;
 Overload, overheat and short circuit protection;
 Sleep, network wake up or local wake up.

Specification

Operating temperature: -30 to 70°C
 Working voltage: 9-32V
 Analog input: 1-way
 Digital input: 16-way
 Power source side output: 20-way
 IP grade: IP54 (front)
 Quiescent current: 1mA
 Size: 195*157*47mm
 1*CAN

Application

new energy bus
 coach and special vehicle

Gateway

VMS105



VMS201



Feature overview

UDS diagnosis,
 online upgrade and easy maintenance;
 Forwarding strategy configurable;
 Network management;
 Modeling development.

Specification

Operating temperature: -40 to 85°C
 Working voltage: 9-32V
 Digital input: 3-way
 IP grade: IP52 (front)
 Quiescent current: <1mA
 Size: 124*95*35mm
 6*CAN | 2*LIN

Application

new energy bus | coach | school bus
 special vehicle | high-end business bus

Feature overview

UDS diagnosis,
 online upgrade and easy maintenance;
 Forwarding strategy configurable;
 Network management;
 Firewall and intrusion detection;
 Modeling development.

Specification

Operating temperature: -40 to 85°C
 Working voltage: 9-32V
 IP grade: IP67
 Quiescent current: <1mA
 Size: 220*195*39.8mm

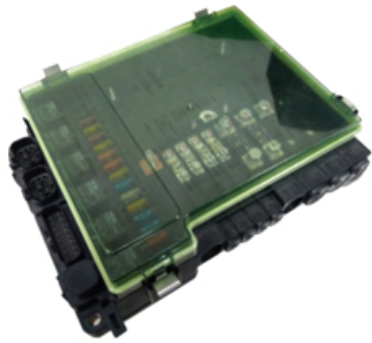
 8*CAN\FD | 2*LIN
 1*100Base-TX | 6*100Base-T1

Application

new energy bus | school bus | driverless vehicle
 special vehicle | high-end business bus | coach

Power Distribution Module

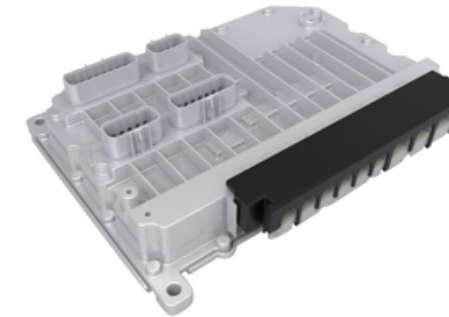
EB202



CEB311



IPDM101



Feature overview

Used for primary power distribution and circuit protection;
Frontal wire leading out, save wiring space;
Dual power source input, such as battery, generator/DCDC input;
Small size, easy installation.

Specification

Operating temperature: -40 to 70°C
Working voltage: 18-32V
200A and below power distribution: 8-way
30A and below fuse: 15-way
Relay: 8
IP grade: IP54 (front)
Size: 330*267*92mm
0*CAN

Application

bus | coach | sanitation equipment

Feature overview

Enclosed design, flame-retardant and environment-friendly material, installed in passenger compartment or an external compartment;
Relay control of high-beam, low-beam, marker light and wiper blade;
Frontal and rear side wire leading out, flexible wiring scheme.

Specification

Operating temperature: -30 to 70°C
Working voltage: 18-32V
20A and below fuse: 61-way
Relay: 25
IP grade: IP54 (front)
Size: 301*211*79 mm

Application

new energy bus | coach | school bus
special vehicle | high-end business bus

Feature overview

UDS diagnosis, online upgrade and easy maintenance;
Overload, overheat and short circuit protection;
Sleep, network wake up or local wake up;
Remote upgrade and wake up;
Modeling development;
Storage battery management function;
Key functions can meet the requirement of ISO26262 ASIL B.

Specification

Operating temperature: -40 to 85°C
Working voltage: 9-32V
Digital input: 12-way
Power source side output: 150A*1, 100A*2, 50A*2, 30A*2, 20A*8, 10A*16
Brushless fan PWM speed adjusting: 4-way
Quiescent current: <10mA
IP grade: IP67
Size: 340*247*63.7mm

Application

new energy bus | coach | truck | driverless vehicle

Intelligent Adjustable Dashboard

Display

10.1 inch IVI, 1280*720
 10.1 inch Control display, 1280*720
 10.25 inch instrument, 1920*720
 Support capacitor multi-finger touch,
 Support AG+AR+AF process

System

High performance 8-core CPU,
 8GB-LPDDR4, 64GB-Flash
 Android P + QNX + Hypervisor

Parameter

Operating temperature: -30 to 80°C
 Working voltage: 9-32V
 3*CAN, 5*Automotive Ethernet (100M/1000M)
 8-way digital power amplifier
 Applicable angle: ±6.5°
 The flipping adjustment force is not greater than 98N, and the operation is smooth.
 Applicable trip: ±55mm
 The up and down adjustment force is not greater than 300N, and the operation is smooth.

Application

High-end bus



LCD 10.1*2+10.25 inch TFT	1280*720 LCD 1920*720 LCD	Multi-angle adjustable
OTA Remote Upgrade	360° panorama Vehicle monitoring	Bluetooth music/ Phone/WIFI



Function

Support instrument 3D display.
 Support for multimedia playback(Music, Video, Picture) .
 Support vehicle key control, microphone playback.
 Support air conditioning control, station control.
 Support Bluetooth music, Bluetooth phone, WIFI.
 Support reverse monitoring, AVM, vehicle monitoring display.
 Support TV playback and multi - sound control.
 Supports 4G networking, OTA, and UDS diagnostic functions.
 The adjustable dashboard support up and down adjustment and fore and aft adjustment.

Intelligent Cockpit System



Function

- Support instrument 3D display.
- Support for multimedia playback (Music, Video, Picture).
- Support vehicle key control, microphone playback.
- Support air conditioning control, station control.
- Support Bluetooth music, Bluetooth phone, WIFI.
- Support reverse monitoring, AVM, vehicle monitoring display.
- Support TV playback and multi-sound control.
- Supports 4G networking, OTA, and UDS diagnostic functions.
- Support voice recognition, mobile phone interconnection, multi-screen interaction.

Parameter

- Operating temperature: -30 to 80°C
- Working voltage: 9-32V
- 3*CAN, 5*Automotive Ethernet (100M/1000M)
- 8-way digital power amplifier

System

- High performance 8-core CPU
- 8GB-LPDDR4
- 64GB-Flash
- Android P+QNX+Hypervisor

Display

- 12.8 inch IVI, 1920*1080
- 10.25 inch instrument, 1920*720
- 22 inch TV, 1920*1080
- Support capacitor multi-finger touch,
- Support AG+AR+AF process

Application

High-end bus | High-end coach